

The **SCENE** is the monthly newsletter of the Southwestern Watercolor Society.

<http://www.swswatercolor.org>

Next Meeting: Tuesday, February 13, 2023, 7:00 - 9:00 pm.

*****NEW Location for THIS Month Only: Marsh Lane Baptist Church**

10716 Marsh Ln, Dallas, TX 75229

PRESIDENT'S MESSAGE

Dalynn Montgomery, SWS President

Dear SWS friends,

We made it through the busy holiday season and now we welcome 2024! I always enjoy the special gatherings and parties and fun surprises that the holidays bring, but I equally look forward to the quieter, slower paced days of the remainder of winter. Spending time painting in my cozy studio while the soup simmers and the bread bakes is my idea of a "perfect winter day." I hope you all are finding time to be as creative as you wish!

Last week I went to New Orleans for a few days with my husband. It was a wonderful trip, but it was cold there too! It warmed up a bit on the 2nd day and I was able to sketch on a balcony overlooking the French Quarter. Such fun!

Our nominating committee is busy trying to identify people who will volunteer for important roles in the coming year. We have many things planned for 2024 to help you ignite and stretch your creative abilities. Our volunteers work hard to find our guest artists for workshops, one day classes and plan paint-out weekends. Our Exhibition team secures venues, details the schedule, prospectus and logistics for our members' exhibition as well as a few new exhibitions to be announced. Other volunteers set up the meeting space for our guest artist demos, keep our dvd library available during the meetings, and organize the Painting of the Month. The hospitality team ensures we have yummy goodies for our meetings, parties and receptions.

If you would like to know more about how you can help volunteer for SWS, please feel free to contact any board officer, chairperson or volunteer. You can also email Memberships@swswatercolor.org. We'd love to get you plugged in to a role that suits your schedule and talents.



Ken Call will be our demo artist for the February 13th meeting and I hope you can join us. We have a change of venue for our February meeting. We will be meeting at Marsh Lane Baptist Church. This is the same location that we had the November meeting. We will be back to Lovers Lane United Methodist Church in March.

Warm Winter Wishes,

Dalynn Montgomery

Dalynn Montgomery
President, Southwestern Watercolor Society

ARTIST'S SPOTLIGHT

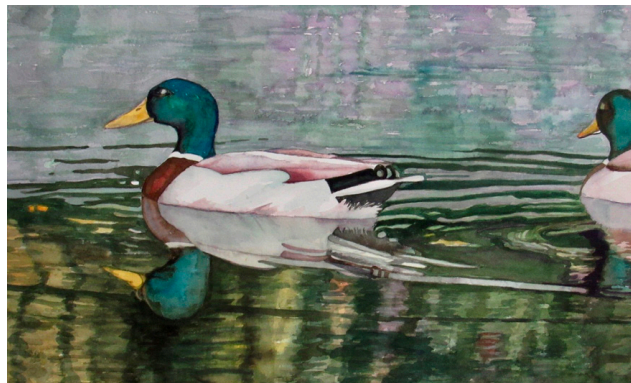
Kathleen Grandjean, SWS

Kathleen Grandjean's California high school offered lots of rare cultural opportunities. In addition to advanced classes in the arts, including dance and



music, the lunchroom won culinary awards for the cuisine. She appreciated the good art teachers there and was gratified when they recommended that she take private lessons. Her parents wouldn't pay for that though because they thought art education was not practical. Nevertheless, she was introduced to watercolor by Mr. Stofer at Ramona High School, and she and her best friend went out on weekends in a green and white Buick sedan to paint images of old barns and mission buildings. One summer she went to Corona Del Mar to visit with a friend's grandmother, and met with the renowned watercolorist, Rex Brandt. The teenagers toured his studio, and he showed them his techniques. Her love for watercolor was ignited.

After leaving California State University Long Beach, she accepted a job as a graphic designer in San Bernardino, and it was there at First Presbyterian Church that she met her husband. They married and she and her three children relocated often as part of his Air Force career. In addition to frequent moves, the children all had medical issues that required a lot of surgeries and care, so Kathleen didn't paint again until they were in Middle and High School in Dallas in the late 1980's.



Kathleen is attracted to very diverse subject matter. Over the decades she has painted people, dogs, florals, landscapes, and still lifes. Before she decides to use them as a reference, the photos she takes need to offer a way to communicate the feeling she had when she snapped the picture. She





says, “The subject must move me before I will decide to paint it.” Her goal is to go beyond reproducing the image to make a bigger statement. She is especially drawn to landscapes, but the extreme weather in Texas makes painting en plain air uncomfortable much of the year. Concern for strong compositions is a driving force for her and she thinks that comes from her training in graphic design. She especially looks for ways to achieve a sense of balance.

The common denominator in all of her paintings is that she feels a personal relationship to the subject matter. For instance, she lived in Italy for a few years and so is drawn to depicting that culture. She often paints imagery from there. She painted the portrait of the baby in her mother’s arms

(shown right) because she could relate to the child’s expression, which seemed to convey both anxiety and curiosity. She was also intrigued by the idea of painting dark skin but realized that, like all flesh tones, it is just a matter of finding the basic skin color and then adding lighting and reflections.



She often depicts the subject matter she finds at home or in her daily life. She painted her two Boxers (shown left) to commemorate their close relationship. The small one had been neglected and was frail when they rescued it, but the two became great companions.

Kathleen snapped a photo of the little girl on the bench in the church atrium while she was watching her sister and a friend play without her. The stylized painting of the saxophone player (bottom right) depicts a Hispanic musician at a Plano pizza place and was part of a series she did of artists at work.



Kathleen loves to paint but tends to paint in spurts and then have periods when she doesn’t pick up a brush again until something else inspires her. She also cannot begin to paint until her house is clean and things are in order. When she is working on paintings, she tends to work for a couple of hours and then put the painting where she can see it as she goes by. She looks for places that need adjustments. This can go on for quite some time before a painting seems to be complete.

Over her lifetime, Kathleen has found many opportunities for creative expression in addition to painting. Before she started to paint again, her creative urges had been met by the needlepoint





Artist's Spotlight cont...

designs that she successfully marketed. She is also a very good cook, and she does a lot of volunteering that uses her creative talent. In 2022 she created ornaments for many Victorian-themed trees as part of a home tour in one of Waco's Historic Homes. She says that creativity has always helped her to get through hard times when they came along.

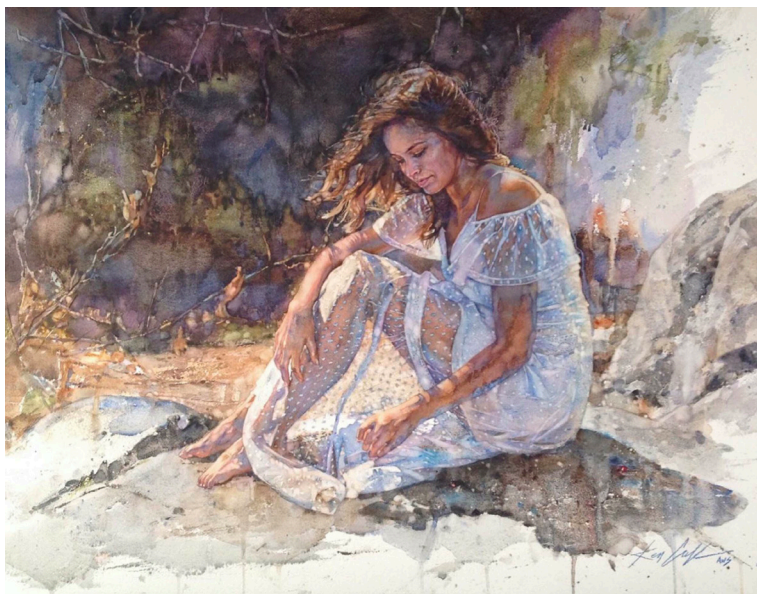
Kathleen confesses that she isn't very good at self-promotion, but she does sell limited edition prints of her painting to friends and on Facebook. During the next few years, she would like to improve sales, be more productive, enter more competitions, and get better at painting large landscapes. (She plans to use reference photos she took on a recent cruise along the Danube River as sources for that series). Ultimately, she'd like to have her paintings in an exhibition of the American Watercolor Society. Good Luck, Kathleen.

UPCOMING EVENTS

February Membership Meeting Moves to Marsh Lane Baptist Church

The February SWS Membership Meeting will be held at Marsh Lane Baptist Church, 10716 Marsh Ln., Dallas, TX 75229. There was a scheduling conflict at Lovers Lane United Methodist Church and so the membership meeting is being moved for this month only.

We will be hosting award-winning watercolorist **Ken Call** who will be doing a demonstration and discussing his approach to watercolor. Calling portraits his true passion in art, Call is a signature member of both AWS and NWS



and is often called upon as a judge and juror for some of the most prestigious art societies in the US. His use of color, compositional approach and paint application result in paintings that differentiate themselves from those of his peers.

Known for his warmth and generosity toward other artists, this will be a memorable program. You won't want to miss it.



Painting of the Month Resumes

The Painting-of-the-Month was suspended in December and January but will resume with the February membership meeting. Winners are selected from paintings by members brought to the meeting. Submissions must be original works in watermedia on paper by members. The Signature Category includes members who have earned the SWS signature (five acceptances to SWS membership exhibitions). The Non-Signature category is open to any member who would like to share their work.



To get more information about the Painting-of-the-Month guidelines, [click here](#).

Bill Dale Offers Another One-Day Class – March 23

By popular demand, SWS signature member **Bill Dale** has agreed to repeat his Fast and Loose Portrait One-Day class. The class will be held on Saturday, March 23 from 9:00 am to 4:00 pm at Marsh Lane Baptist Church, 10716 Marsh Lane, Dallas, TX 75229. The room will be open at 8:30am to allow students to set-up their work area.

This workshop will introduce Bill's approach to painting portraits with watercolor. We will be painting from a reference photo supplied by Bill or you can use your own. It will include step-by-step instruction and provide much individual attention. In addition to watercolor technique, Bill will be teaching the basic proportions of the head and the planes of the face (although you will trace your photo for the drawing). He will also teach the many watercolor tips and tricks that he has picked up over the years.

The class will be limited to twenty participants. Members will pay \$100 for the day. Non-members will pay \$115. Registration is required and should be open soon. We will send an email notification when registration is officially open.



SWS Three-day Spring Workshops Begin This Month

The Spring workshop season is drawing close, and begins February 13th with artist **Ken Call**.

This workshop is currently full, but you can go to [SWS Workshops page](#) to add yourself to the wait-list in case of any cancellations.

March

Fort Worth Photorealist Painter Soon Y. Warren comes to Dallas!

The March SWS 3-day workshop promises to be full of sparkle when photorealist painter **Soon Y. Warren** comes to teach a course on painting crystal and obtaining the deep darks that make her paintings shine in such glorious ways. The workshop is held March 12-14 and has drawn interest from folks in several states, as Soon Y. is known internationally and has appeared on Watercolor Live. If you are at all interested in florals, hyperrealism or glazing techniques, this is the workshop for you! We have only a few spots left so please go to the [SWS Workshops page](#) to register.



April

The Spring season will wrap up with the fresh and lively techniques of artist **Tom Francesconi**.

This workshop will expose the students to Tom's approach to creating interpretive watercolors that are fresh and dynamic.

Emphasis will be on creating better paintings through an understanding of the importance of well-considered value relationships, meaningful color decisions and brushwork that delights and entertains the eye. Throughout this process, Tom will share his thoughts and approach to breaking free from the tyranny of the reference photo, encouraging a more creative and satisfying painting experience.



Students will gain a better understanding of the power of simplicity through a preliminary process of letting go. Daily demonstrations will allow the students to see how Tom approaches a painting from start to finish. Exercises aimed at helping students better understand certain concepts will also be employed. Throughout, Tom strives to create an atmosphere that is educational, inspirational and joyful.

Please register at [SWS Workshops page](#).

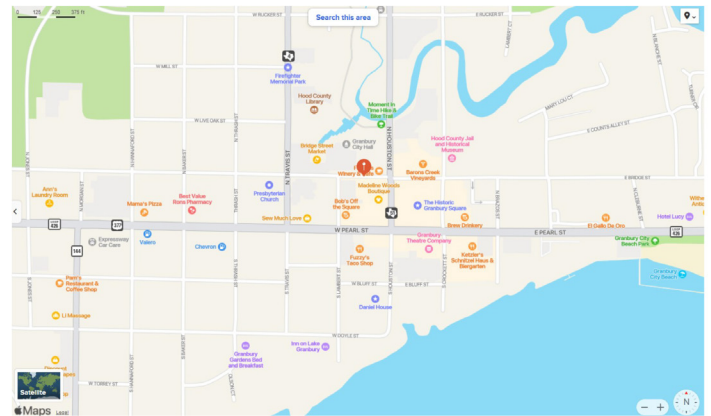
SPRING PAINT-OUT: Granbury Texas, April 26, 27 & 28

Dan Killebrew and **Ray Mosier**, SWS Paint-Out Chairs, invite all members of SWS and their families to participate in Southwest Watercolor Society's Spring Paint-Out 2024. It will be on the last weekend of April (Apr. 26-27-28). After many suggestions and considerations, we have chosen to head down to Granbury, TX. to Paint the Town, literally!



We are showing a couple of maps and providing some historically significant information that may appeal to you as a painting location. Historic Downtown Granbury offers some great sights and people places and is very friendly toward artists.

The historic square and courthouse, which is on the national historic register and proceeding up and down Pearl Street or Travis or Houston Streets are great places to consider for your set up. Since we have parts of 3 days for our plein aire adventure it would be easy to try all of them. Furthermore, a long listing of great sights is available below:



Granbury Opera House

Restored to the original period of 1886.
133 E. Pearl Street

Haunted Granbury

Where Texas history never left!

Granbury State Historical Cemetery

Jesse James lies here... allegedly!
801 N. Houston Street

Brazos Drive-In Theater

Built in 1952, the Brazos Drive-In Theater has been in continuous operation as one out of a handful left in the great state of Texas.
1800 W. Pearl Street

Hood County Jail Museum

Built in 1885 with a gallows room for possible local executions!
208 N. Crockett Street

Dollhouse Museum

Over 6,000 dolls from across the world circa the late 1800s through today!
421 E. Bridge Street

Elizabeth Crockett Gravesite

David Crockett's wife lies here.
Acton Cemetery FM 16

Yeats-Duke 1858 Museum

Original Yeats log cabin. See what is hidden in the walls for 100+ years.
214 N. Crockett Street

Granbury Light Plant

The first electric light plant in Granbury was established in 1903.
510 E. Ewell Street

Hood County Historical Commission

Explore 70 Historical Locations in Hood County.

The Legend of John Wilkes Booth

A long-standing folklore legend, many believe that John Wilkes Booth once lived in Granbury, above the Nutshell Eatery (now the Square Cafe), as John St. Helen. The story even appeared on "20/20" and "Unsolved Mysteries".

Granbury Historic Railroad Depot

Built in 1914, the Granbury Historic Railroad Depot offers a glimpse into the frontier days when railroads were vital transportation between towns.
109 Ewell Street

Bridge Street History Center Museum

The stories! Written, oral, feuds, murders, legends, and love.

319 E. Bridge Street

Yeats-Duke 1858 Museum

Original Yeats log cabin. See what is hidden in the walls for 100+ years.

214 N. Crockett Street

Granbury Light Plant

The first electric light plant in Granbury was established in 1903.

510 E. Ewell Street

Hood County Historical Commission

Explore 70 Historical Locations in Hood County.

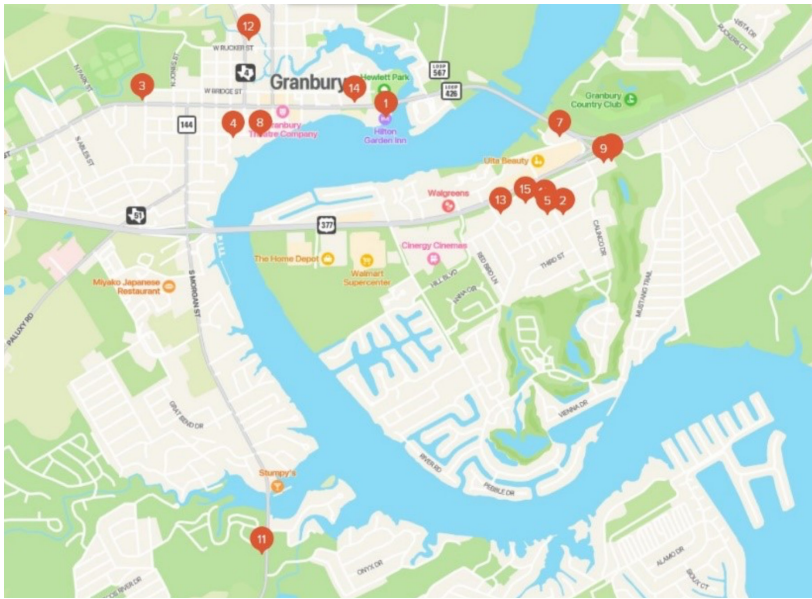
The Legend of John Wilkes Booth

A long-standing folklore legend, many believe that John Wilkes Booth once lived in Granbury, above the Nutshell Eatery (now the Square Cafe), as John St. Helen. The story even appeared on “20/20” and “Unsolved Mysteries”.

Granbury Historic Railroad Depot

Built in 1914, the Granbury Historic Railroad Depot offers a glimpse into the frontier days when railroads were vital transportation between towns.

109 Ewell Street



Granbury is ideally set up for folks like us. Downtown is situated on Lake Granbury for some natural beauty and good boat dock scenery. Additionally, hotel and Bed and Breakfast accommodations are readily available and convenient. A quick list below might help you in determining how you might like to spend your “non-painting” time (is there such a thing?). Also, below is a map for you visual learners of the hotel and B&B locations.

GRANBURY HOTEL AND B&B ACCOMODATIONS

1. Hilton Garden Inn Granbury \$\$

635 East Pearl Street

2. Comfort Suites \$\$

903 Harbor Lakes Dr

3. Pomegranate House & Cottages B&B \$\$

1002 W Pearl St

4. Granbury Gardens Bed And Breakfast \$\$\$

321 W Doyle St

5. La Quinta Inn & Suites by Wyndham Granbury \$\$

880 Harbor Lakes Dr

6. Best Western Granbury Inn & Suites \$\$

1517 Plaza Dr

7. Lake View Inn \$

1451 E Pearl St

8. Captain's House

123 W Doyle St

9. Holiday Inn Express & Suites Granbury, an IHG Hotel \$\$

1515 Plaza Drive North

10. Quality Inn & Suites \$

800 Harbor Lakes Dr

11. Dinosaur Trail Cabins and Cottages \$\$

2800 Highway 144 South

12. Travis Street Cottages \$\$

512 N Travis St

13. Days Inn by Wyndham Granbury \$

1201 N Plaza Dr

14. Hotel Lucy

530 E Pearl St

15. Granbury Inn & Suites \$

1339 N Plaza Dr

We will have more information published as it becomes available such as where we'll meet up for Dinner on Saturday night, and where we might gather to kick things off.

In the meantime, navigate to the sign up page on the SWSWatercolor.org website. See the link here: https://swswatercolor.org/content.aspx?page_id=4002&club_id=400280&item_id=2183249

The sooner you sign up the sooner we can begin to get our numbers of participants to make proper arrangements for our sharing and mealtimes.
Looking forward to seeing everyone!

RECENT EVENTS

SWS Artworks Accepted to 2024 WFWS Exhibition

Congratulations to the SWS members who had artworks accepted for this year's Western Fed exhibition in Phoenix, Arizona. Members of ten watercolor societies across eight western states were eligible to participate and the annual exhibition is hosted by each group successively. SWS was the host in 2023 and this next one will be hosted by the Arizona Watercolor Society at the Found:RE Phoenix Hotel in Phoenix from March 1, 2024 - April 28, 2024.



Sixty-one SWS artists entered. Only eleven artists had paintings accepted. Those artists are **Monica Austin, Cheryl Baron, Valerie Batchelder, Dana Brock, Sondra Carr, Gail Delger, Ginny Hoppe, Olivette Hubler, Jessica Kirklin, Pat Kochan, and Ken Toki**. With their acceptance in this year's exhibition, Ginny Hoppe and Olivette Hubler have now earned SWS signature status.



Monica Austin
"One Time Back When"



Cheryl Baron
"Trees In Azure Moonlight"



Valerie Batchelder
"My Friend"



Dana Brock
"Grounded View"

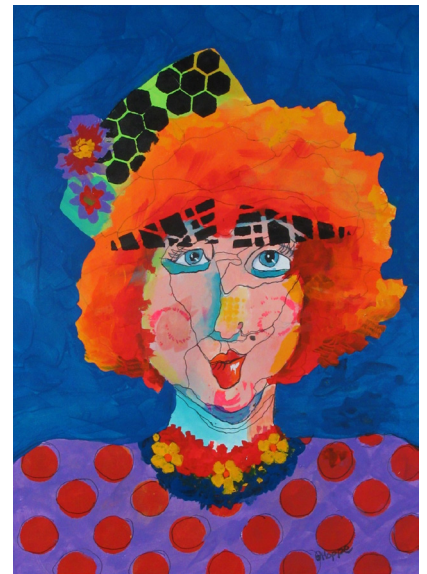
SWS Artworks Accepted...(cont.)



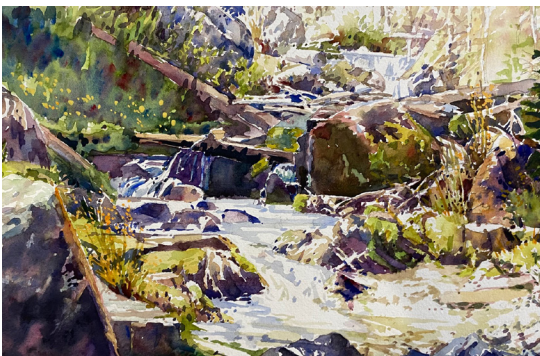
Sondra Carr
"I See You"



Gail Delger
"The Neighborhood"



Ginny Hoppe
"Mattie Mae"



Olivette Hubler
"Alpine Snow Melt"



Jessica Kirklin
"Paradise"



Pat Kochan
"Symbolic Symbols"



Ken Toki
"Citizens Parade"

Bill Dale Featured at January Meeting

January Program Featured Bill Dale, SWS, as he demonstrated his process for painting a “Fast and Loose” watercolor portrait. This meeting was well attended.

Bill’s professional career is as an Industrial Product Designer but he has built a strong reputation as a watercolor painter focusing on portraits. Making no apologies, Bill told the group that he likes painting pretty girls, not old guys

with beards so that is the subject of most of his work. The subject for the SWS demonstration was based on one of Bill’s photos, but he made major changes to the girl’s features. Once he had a good drawing, he redrew it freehand on watercolor paper with vine charcoal because that is a forgiving medium and easy to remove. Before he began to paint, Bill had masked the light on the hoop earrings.

Painting on Arches rough paper, before he began to paint he mixed up some puddles of color for his first application of paints. He began to paint on dry paper around the lights to establish the midtone shadow shapes. He stressed that he strives to paint connecting shadows in one shot using mostly yellow ochre, permanent rose, and cobalt blue with some complements to neutralize colors as needed. The nose, cheeks and earlobes had a lot of red. That first pass included some pure color painted in the hair to enliven the look when the dark hair was added later. He also added some color in the background that linked into the hair to unify the painting. The colors he chose are prone to granulate in order to add interest.

All the shapes had hard edges until this point, but he began to soften some edges to distinguish between cast shadows and form shadows. Form shadows are the shadows that are on an actual physical object, like the shadow side of a tree. Cast shadows are the shadows that the tree itself casts upon another object and form shadows are created when a rounded shape turns away from the light. At this point, the painting is similar to a value study and he adds some color into the lights as well.

After everyone had a short break, he mixed up dark colors for the hair. He said that the particular hues don’t matter that much, but he chose Burnt Umber, Indigo, Alizarin Crimson and then he arbitrarily also dropped in a favorite, Cobalt Teal. Next he added the features like the nostrils and the eyes. Rather than painting lashes, he painted the edge of the eyelid and dragged the dark down into the eyeball. In particular, he likes to paint the shadow on the outer corner of the eye. The hardest area is at the chin

line. It needs to be soft and often it needs to be softened. If he needs to do that, he uses an eradicator brush to lift back the hard edge. At this point, he began to make some adjustments in the colors and values. In particular, he decided that he needed to add some cadmium red to the nose and darken the nostrils. Another trick he often uses is to use pastel pencils to add a few lines and highlights. The highlight on the eye was created using white gouache.

At the conclusion of the meeting, some audience members asked if there could be another one-day class for Bill to teach this approach. Bill agreed that he would be open to doing that. The new class is now scheduled for Saturday, March 23, 2024, 9:00 AM until 4:00 PM at Marsh Lane Baptist Church. Registration will open up soon, so check the SWS website, to secure a spot!



HAPPENINGS

Les McDonald, Jr. has been accepted in the 157th American Watercolor Society International Show in New York.

This is the third time Les has been selected. With that, he receives AWS Signature status. The painting is entitled “Casas” Costa Rica (shown right).

The exhibition will be held April 2-28, 2024, at the Salmagundi Club, 47th Street, New York, NY. Les feels honored to have received this national recognition.



Nel Dorn Byrd received the first place award on her painting, “Colors of Fall” (shown left), in the VAST 175 Mile Exhibition. The Exhibition hangs through Feb. 17 in the Gough Gallery at the Patterson Appleton Arts Center in Denton.

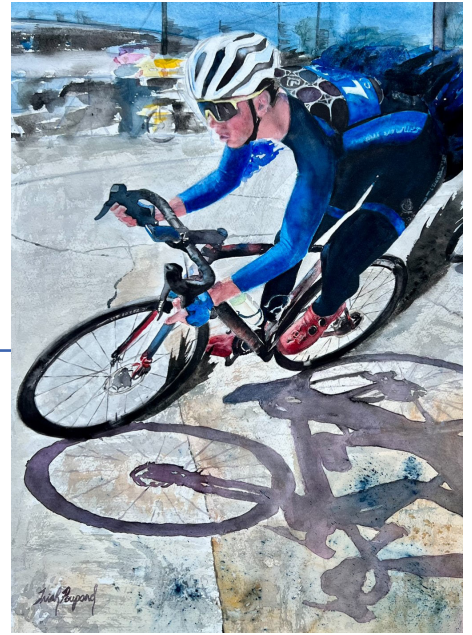
Nancy Neaher Maas had two painting weavings accepted into the sixth annual “Winter Art Show” in the Grand Gallery and Community Gallery at the Frisco Discovery Center. The exhibition was displayed from December 12th, 2023-January 14th, 2024. Her painting, “Winter Sunset” 32” x 40” (shown right), remembers her former home in upstate NY where snow lasted “forever.”



Cindy Baird was interviewed in RED RIVER PAPER’s blog, where she discusses her business and the importance of having her watercolor’s not only printed on quality paper, but matching the colors of her original paintings perfectly. You can click on the link below to read the full interview.

[Success on Paper: Cindy Baird, Watercolor Artist](#)

Trish Poupard's painting, "The Essence Of Speed" (shown right), has been invited to the FabrianoloAquarello 2024. This year the event is from 23rd-29th April in Fabriano and Bologna, Italy. The exhibition extends until June, and in October the whole exhibition will move to Fort Worth, Texas.



Hollan Holmes's painting, "Circa 1912 International Harvester Sickle Mower Blade" (shown left), was accepted into the 157th Annual American Watercolor Society Exhibition. Painting information: 20"x20" Daniel Smith watercolors on Arches 140 lb. cold press.

ANNOUNCEMENTS

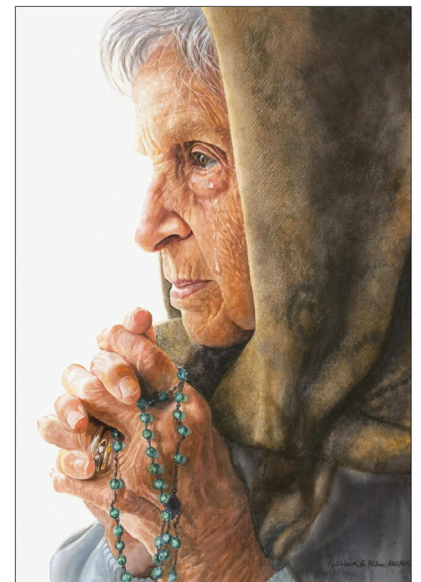


Our friends at the **Louisiana Watercolor Society** host their 54th Annual International Exhibition this year with an online show and workshop featuring juror of selection and judge of awards, **Kathleen Giles**. Submit jpgs of paintings now through February 29th, no mailing of paintings required. Open to all water media artists 18 and older. LEAP with us into 2024.

<https://louisianawatercolorsociety.org/54th-annual-international-exhibition-prospectus/>



We also are sponsoring an online workshop with Kathleen Giles May 14-16. Anyone interested can register at <https://louisianawatercolorsociety.org/dynamic-value-kathleen-giles/>. Seats are limited and will be allocated on a first enrolled/ first served basis.



BOARD NEWS


Using the Membership Directory on the SWS Website

One of the benefits of the SWS website is that it is possible to find contact information for other members. It is then possible to find a particular person's phone number or email address, find other members who live near you, and find websites of other members. If you search for someone who you know is a member and they aren't listed, they may have not opted to have their information available to other members. If that was not intentional, they can change their preferences after they login to their profile.

To use the directory to find someone, go to the 'Members Only' tab on the top menu, select 'Member Directory' and then type in the name of the person you are looking for.

You can also get a list of all the members in the society. To do that, log in as a member, go to the 'Members Only' tab and then to 'Forums'. The third entry is 'Members Directory'. Click on the 'Membership Directory PDF' file to download the file.



The directory information is a service for members but security must be maintained. Do not give the directory to anyone who will use the information for commercial purposes or anyone not given Board approval. No mass emails of members are allowed by anyone unless approved by the Board of Directors.

 watercolor
Society

HomeActivities

Standard Member Directory

The Member Directory allows you to view other members. (Note that your own directory information can be updated by clicking the Profile link.) Enter search text (If no search values are specified, all members will be displayed. If there is more than one page of results, use the Paging controls to see additional pages. Click the name or bio image to view more information. Note that members can also choose to completely remove their names from this list. If a map is displayed, members are displayed as points on the map. If a postal code/radius search is performed, users will only be displayed if they have valid latitude/longitude (geocode) on the map (or in results when performing a radius search) they may have restricted visibility, or do not have valid geocodes in their profile. Users with certain restrictions may not be displayed on the map.


Hide
Search

Search Criteria

Search Text

First or Last Name of Member

Search by member name (first name or last name or full name or nickname) or work company

Interests

< Any >

Country

<All>

Show All

State

<Select a country>

City

Use to find people in a city

Within

<any distance>

of zip:

Reset

Search

Search for members by entering criteria above

CONTACTS

Dalynn Montgomery
President@swswatercolor.org

1st VP - PROGRAM CHAIR

Kent Perigo

2nd VP - MEMBERSHIP CHAIR

Jan Venuso, 214-535-7213
Membership@swswatercolor.org

3rd VP - WORKSHOPS CHAIR

Constance Corbett
Beth Menking
Workshops@swswatercolor.org

4th VP - EXHIBITIONS CO-CHAIRS

Shahrzad Afshinpour
Kay Byfield, 214-532-5559

5th VP - COMMUNICATIONS CHAIR

Kay Byfield, 214-532-5559
Communications@swswatercolor.org

RECORDING SECRETARY

Gene Painter

TREASURER

Janet Southern
Treasurer@swswatercolor.org

PAST PRESIDENT/ PARLIAMENTARIAN

Paula Vining

PAINT OUT CHAIRS

Dan Killebrew, Raymond Mosier

SCENE EDITOR

Lori Williamson
Newsletters@swswatercolor.org

MEMBERSHIP NEWS

Total Members in January

407

*Welcome to Our
Newest Members!*

**Sandy Ibach
Mariana Manzano
Joel Travis**



ADVERTISEMENTS

SWS SCENE NEWSLETTER AD RATES

\$25 for ads 3" or less in either dimension
\$50 for ads 5" or less in either dimension
\$75 for ads 7" or less in either dimension
(7" is the absolute size limit for an ad)

Submit proofed copy on website at
https://swswatercolor.org/Submit_Ad
by the 20th of the month prior to publication.

JERRY'S ARTARAMA® Retail Stores

12817 Preston Rd., Suite 128
Dallas, TX 75230

(972) 803-5664

WATERCOLOR WORKSHOP

'Painting Figures from Photos'

**New Skills in Seeing and
Interpreting**

LORI HESS

TWSA, RMWS, NWWS



May 6 - 10, 2024

Texas Hospitality at 404 Ranch

Request a class brochure or inquire at:

lori@lorihesswatercolors.com

330-998-3524

Or

Jackie Railsback - jjrails@mc.com

817-657-8691

MEMBER TEACHER LISTINGS

*Teacher listings are available to members
for a small annual fee of \$25.*

*For more information, contact
Communications@SWSWatercolor.org*

**LISTINGS ARE FROM JUNE - MAY
FOR THE
2023-2024 MEMBER YEAR**

Trish Poupard, WW, SWS, TWS, SWA, SCWS, PWSA

All Levels Welcome, Watercolor Techniques Class
Wed's 10am-1pm Touchmark at Emerald Lake, McKinney
Contact Trish to Register for WC Classes
Text: (626) 862-9869; Email: trish@trishpoupard.com

Al Kline, SWS

Email: alklineart@gmail.com
Drawing & Urban sketching courses, watercolor, all levels
Website: albertkline.com

Paula White, Artist & Instructor, 50 years of experience

817-527-6736; paulaswhitehssa@gmail.com

Private & Group workshops, classes
Watercolor on Yupo

Michael Borne, SWS

(512) 318-1279, Email: mborne@att.net
Transparent Watercolor and Sketching Lessons
Beginners Welcome! Private Lessons available
Website: www.michaelborne.com

Kay Byfield, MFA, SWS; 214-532-5559

ArtSpeaksKayByfield@gmail.com
Traditional Watercolor, all levels
www.CreativeArtsCenter.org

Laura Lee Drumwright, SWS; 615.424.2934

LauraLeeGallery@gmail.com
Beginner-Intermediate
Private & Group Workshops/Classes
www.LauraLeeGallery.com

**Member Teacher Listings Rate: \$25 per year for
four lines (135 characters)**